

24076 Reedy Dr.  
Elkhart, IN 46514  
(574)-266-5551 (Office)  
(574)-206-9296 (Fax)

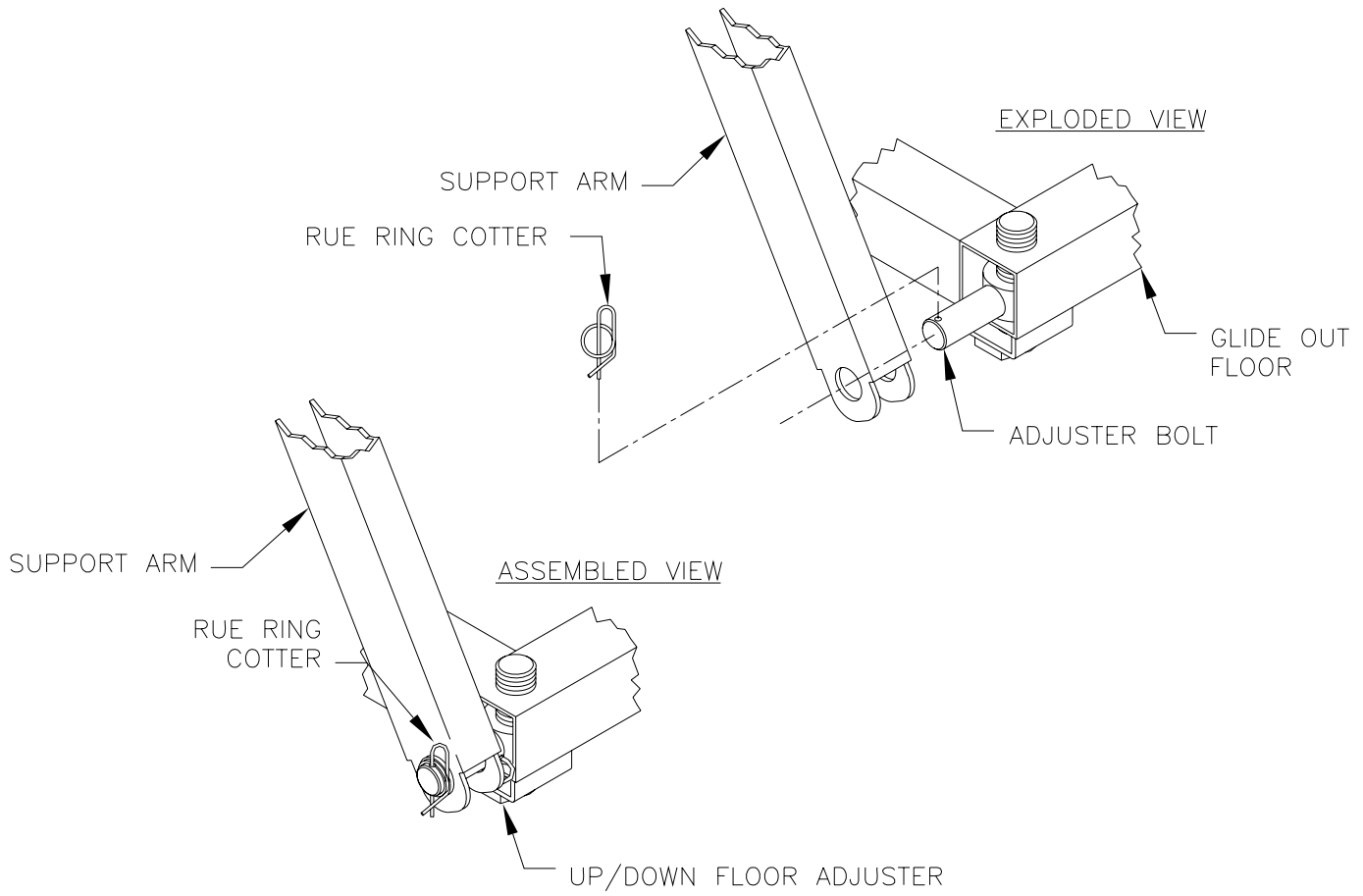
---

**SLIDE COUPLER REPLACEMENT**  
**SERVICE MANUAL #400012**

1. Run slideout room to the full outward position.
2. Support slideout room from underneath to relieve pressure on outside main support arms. Arms must be loose and not support the weight of the slideout room.
3. Disconnect main support arm from adjuster I-bolt located at each outside corner of slideout room by removing “Rue-ring” style cotter pin attached to the outside of I-bolt. Once pin is removed, slide arm off and away from adjuster I-bolt. – (See ILLUSTRATION 1)
4. Located on bottom of 5/8” diameter main support slide pin, remove the 1/4” hex bolt holding pin onto slide pin bracket. Pull bottom portion of main support pin away from bracket. – (See ILLUSTRATION 2)
5. Slide plastic coupler down and off main support slide pin.
6. Remove clevis pin holding plastic coupler to main support arm.
7. Install steel coupler (Liftco part #885308-AA) onto main support arm using clevis pin removed in step 6.
8. Slide steel coupler back onto main support slide pin and reattach pin onto slide pin bracket using the 1/4” hex bolt removed during step 4.
9. Slide bottom portion of main support arm onto adjuster I-bolt located at outside corner of slideout room. Install “Rue-ring” style cotter pin removed in step 3.
10. Apply a small amount of grease on 5/8” diameter main support slide pin

Warranty: Liftco will cover up to 1-hour of labor at a maximum rate of \$75 per hour. This warranty work is to replace noisy slide coupler on Class ‘A’ & ‘C’ units, if necessary. In most cases the warranty work should be less than 1-hour. Liftco will warrant through normal channels through Coachmen Warranty & Service.

# ILLUSTRATION 1



## ILLUSTRATION 2

