

24076 Reedy Dr.
Elkhart, IN 46514
(574)-266-5551 (Office)
(574)-206-9296 (Fax)

THREADED-ROD REPLACEMENT

MANUAL #400009

1. From Inside/top of Glide Out floor, locate and remove threaded-rod access panel (if equipped).
2. Position Glide Out room so that the threaded glide block is completely visible and accessible through access hole* (see Detail 1).
3. Remove the two 5/16-18 x 2-1/2" socket head cap screws from the threaded glide block (see Detail 1).
4. Push floor outward until the room is fully extended.
5. From outside and underneath Glide Out floor, locate and remove the two screws holding the rod plate into place (see Detail 2).
6. In a downward angle, pull threaded-rod & glide block assembly out from floor. Remove the rod plate. Rod plate will be re-used during new rod installation.
7. Using the glide block from the replaced threaded-rod or a supplied new one, spin the glide block onto threaded-rod. Be sure the glide block is correctly orientated on the threaded-rod (see Detail 1).
8. Slide the bronze bushing / nut end of threaded rod assembly through the existing hole located towards the inside of Glide Out room floor frame (see Detail 3).
9. Re-install rod plate (removed from step 6) onto free end of rod (see Detail 2).
10. Push rod up into place and re-install the removed screws (from step 5) through the rod plate and into the Glide Out floor frame (see Detail 2).
11. Push Glide Out room in far enough so that the through holes on threaded glide block are aligned with anchor nuts on bottom Glide Out floor frame. Install the 5/16" socket head cap screws. When these bolts are re-installed, a mild lock tight should be used to keep bolts from backing out. **Do not tighten these all the way down.** Only tighten screws in approximately 1/4" below the top of the aluminum block. This is to allow the aluminum block to "float" up and down with the adjustment of the Glide Out room seal adjustment(s) (see Detail 4).
12. Operate the floor normally and make any adjustments as needed.

Approximate Completion Time: 15 – 25 minutes

*Note: If a bad threaded-rod is not turning by normal methods, rotate rod by the use of hands or vice grip style pliers. However, pliers may damage the threaded rod.

DETAIL 1

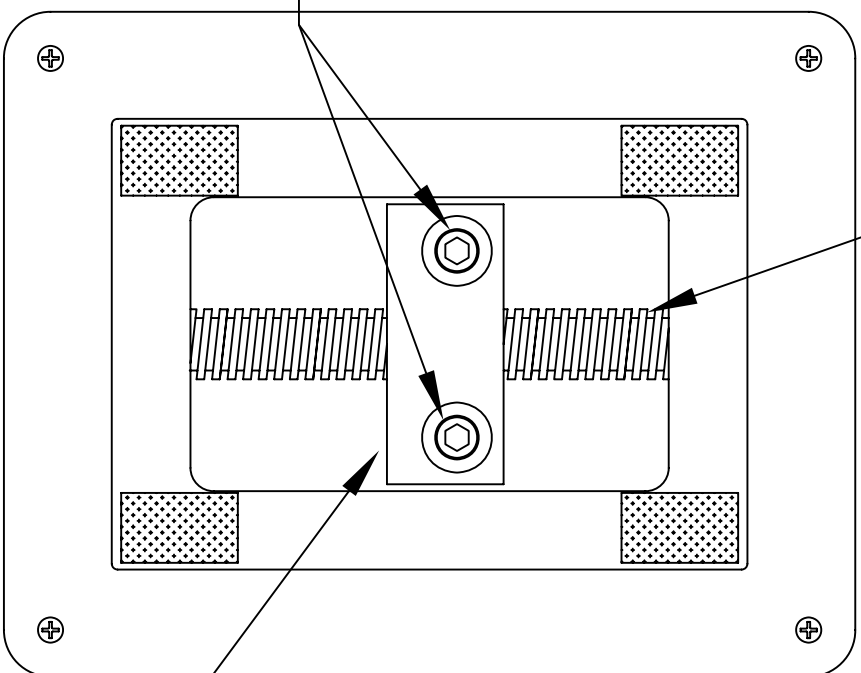
OUTSIDE OF

COACH

THREADED-ROD

ACCESS PANEL-IF EQUIPPED
(SHOWN WITH COVER
REMOVED)

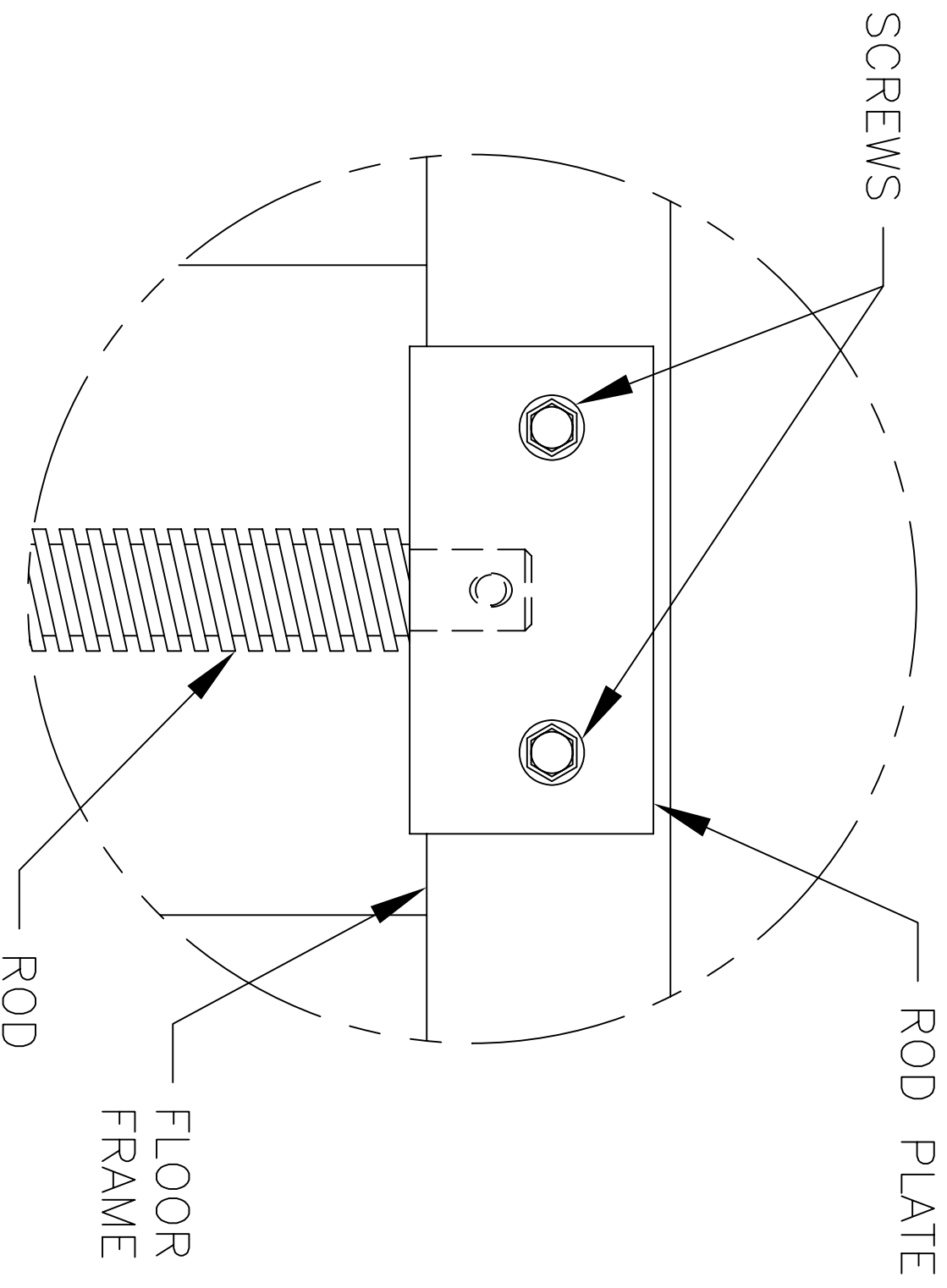
5/16-18 x 2-1/2"
SOCKET HEAD CAP SCREW



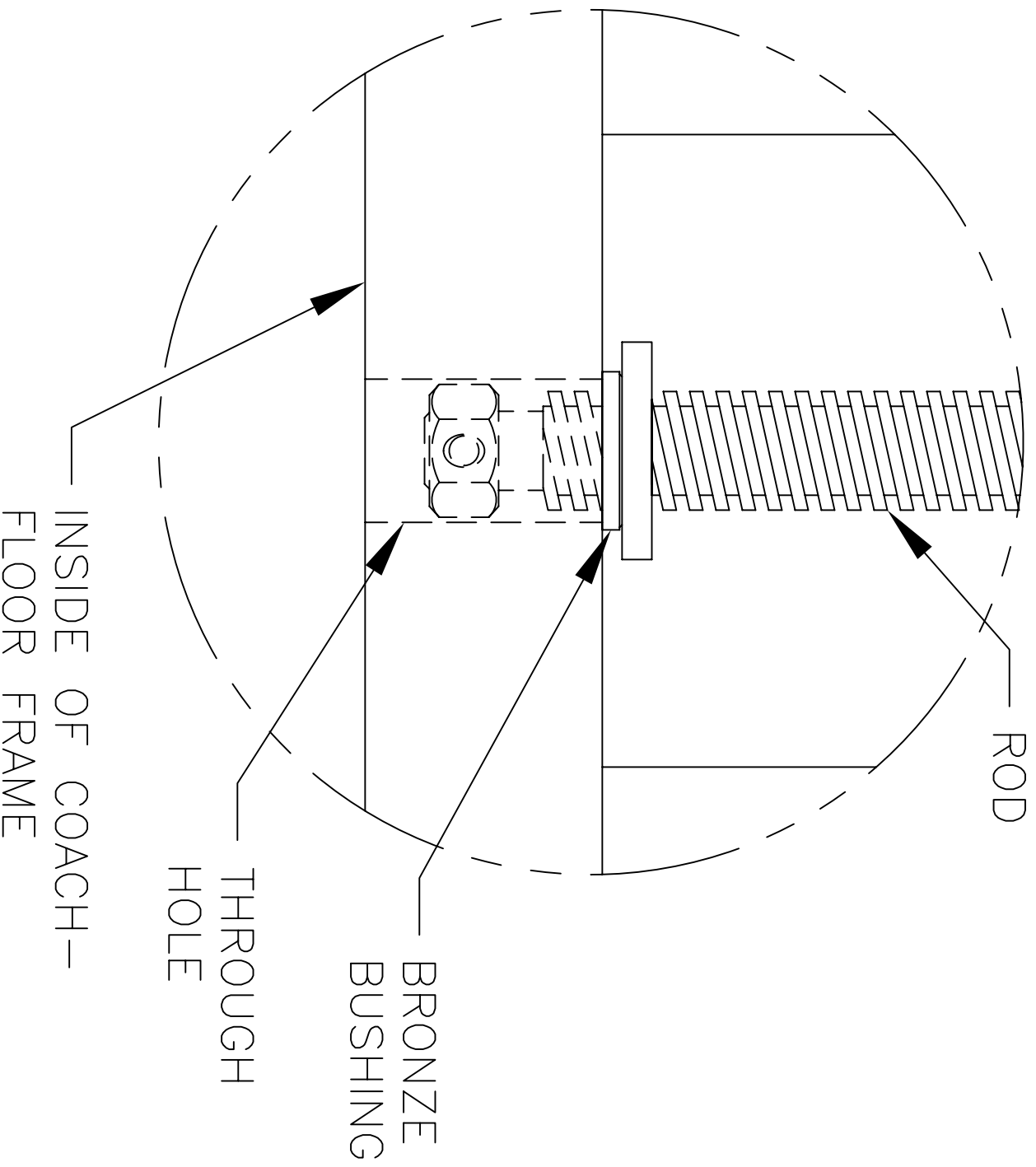
THREADED GLIDE BLOCK
(NOTE: OFFSET HOLES ARE
POSITIONED TOWARDS THE
OUTSIDE OF THE COACH)

INSIDE OF
COACH

DETAIL 2



DETAIL 3



DETAIL 4

