

24076 Reedy Dr.  
Elkhart, IN 46514  
(574)-266-5551 (Office)  
(574)-206-9296 (Fax)

---

## **THREADED-ROD REPLACEMENT SERVICE MANUAL #400006**

### **INSIDE OF GLIDE-OUT**

1. From Inside/top of Glide Out floor, locate and remove any coverings around motor and access panel.
2. Remove flat Velcroed panel from floor panel to gain access to threaded T-Block. If T-Block is not located in opening, press wall switch to operate room in/out until T-Block is visible (see Detail 1).
3. Remove the two 3/8 x 1" socket head shoulder screws (5/16-18 thread) from the threaded T-Block (see Detail 1).
4. On top of motor housing, remove the two sheet metal screws located on each side of motor housing plate and remove (see Detail 2).
5. On motor housing, remove the four bolts and lock washers securing motor to motor housing (see Detail 2).
6. Slide motor downward and remove chain from motor sprocket

### **OUTSIDE OF GLIDE-OUT**

7. From bellow glide-out, rotate threaded rod by hand clockwise until threaded T-Block clears past floor of coach.
8. Remove the two hex-washer head screws holding threaded rod mounting plate to floor (see Detail 3).
9. Drop rod assembly down and pull rod outward and away from floor. Remove chain from rod assembly. Chain will be used on new rod assembly.
10. if rod is not pre-assembled, assemble new rod using new threaded rod, bushings and race washers exactly as shown in Detail (4). Place chain around threaded rod sprocket at this time.
11. Install newly assembled rod assembly into Glide-Out floor. Nut / bushing end of rod must be seated first into through hole on inside portion of Glide-Out floor. Entire assembly will only fit if nut/bushing end is seated into this through hole properly. This is usually done by aligning rod assembly in center of wipe material while maneuvering rod slightly until the "feel" of nut/bushing protrudes into hole and this particular end of rod cannot be moved from side to side (see Detail 5).

12. Using the two removed hex-washer head screws from step (8), reinstall these screws through the threaded rod mounting plate and into Glide-Out floor (see Detail 6).

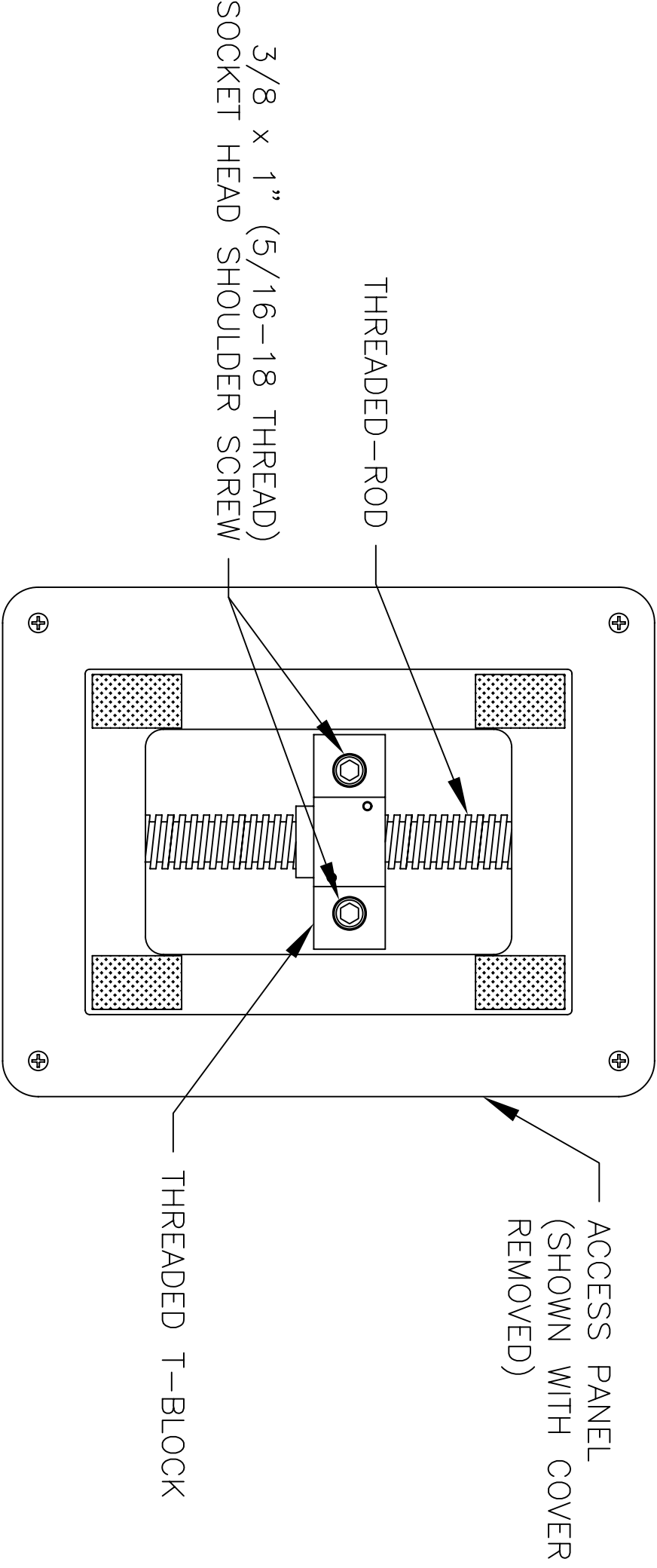
### **INSIDE OF GLIDE-OUT**

13. Place chain onto motor sprocket being sure chain is properly engaged onto threaded rod sprocket below (second person from outside/below Glide-Out floor pushing upward on chain may help in retrieving chain for this process).
14. Replace the four screws that were removed in step (5) through motor plate and into motor mount housing. Screws need to be slightly loose (see Detail 2).
15. Pull upward evenly on motor to tighten chain onto sprockets. This is best accomplished by using a type of wedge(s) (i.e. two wooden wedges placed on each side and below motor case housing) to place constant even upward pressure on motor / chain.
16. Tighten all four screws on motor mount housing (see Detail 2) and remove wedges if used. Chain should be tight at this point with little or no movement.
17. Replace the top motor housing plate and secure with the two previously removed sheet metal screws (see Detail 2).
18. If threaded T-Block not visible in access panel opening, press wall switch to operate rod in/out until T-Block is visible (see Detail 1). Position T-Block so that the through holes on T-Block are aligned with anchor nuts on bottom centerpiece of wall frame. This may require positioning the block as close as possible through the use of the wall switch and making final positioning adjustments by maneuvering Glide-Out floor by hand.
19. Reinstall the two 3/8 x 1" socket head shoulder screws removed in step (3) through T-Block and into anchor nuts on bottom centerpiece of wall frame.
20. Operate floor through use of wall switch and make any adjustments as necessary.
21. Replace any coverings around motor and access panel that were removed in step (1).

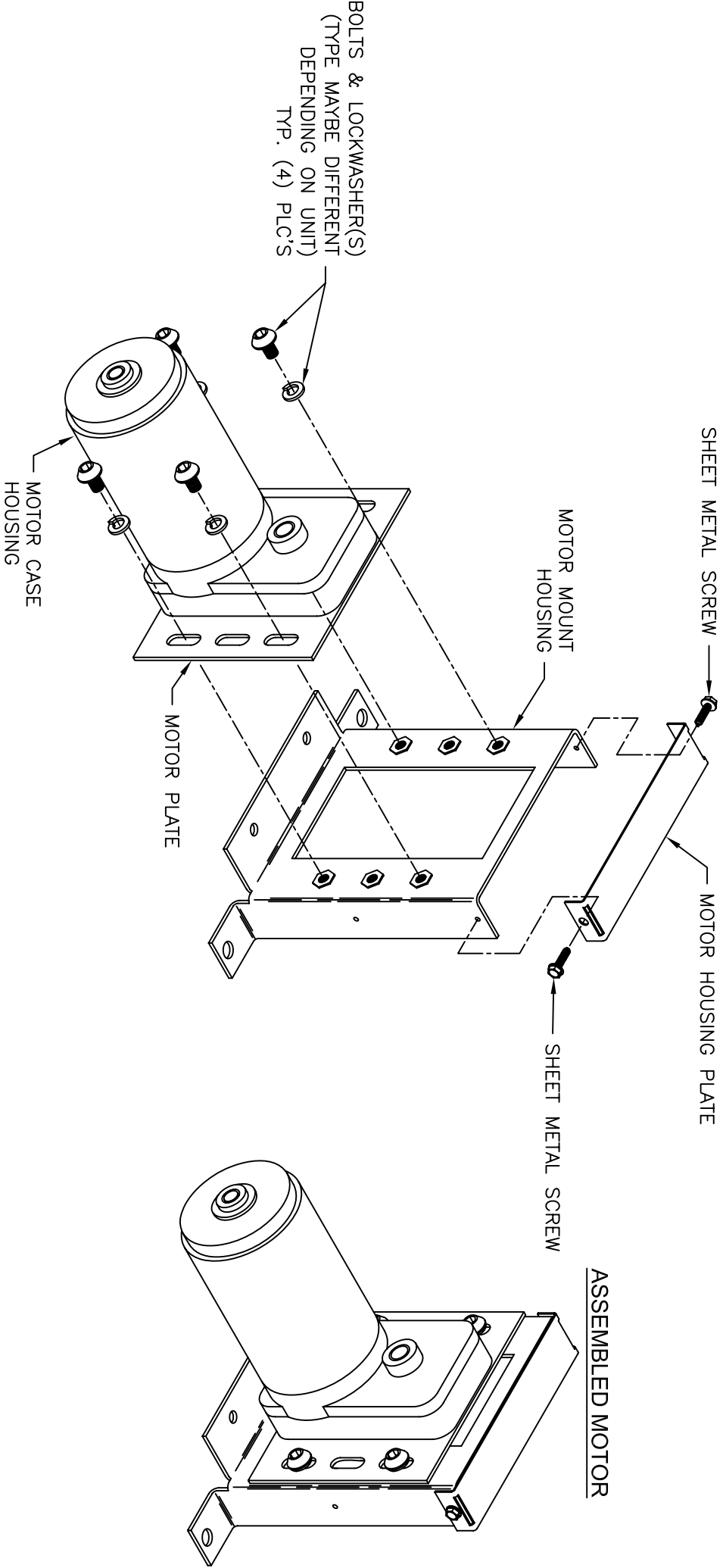
Approximate completion time: 30 – 60 minutes.

# DETAIL 1

MOTOR  
SIDE

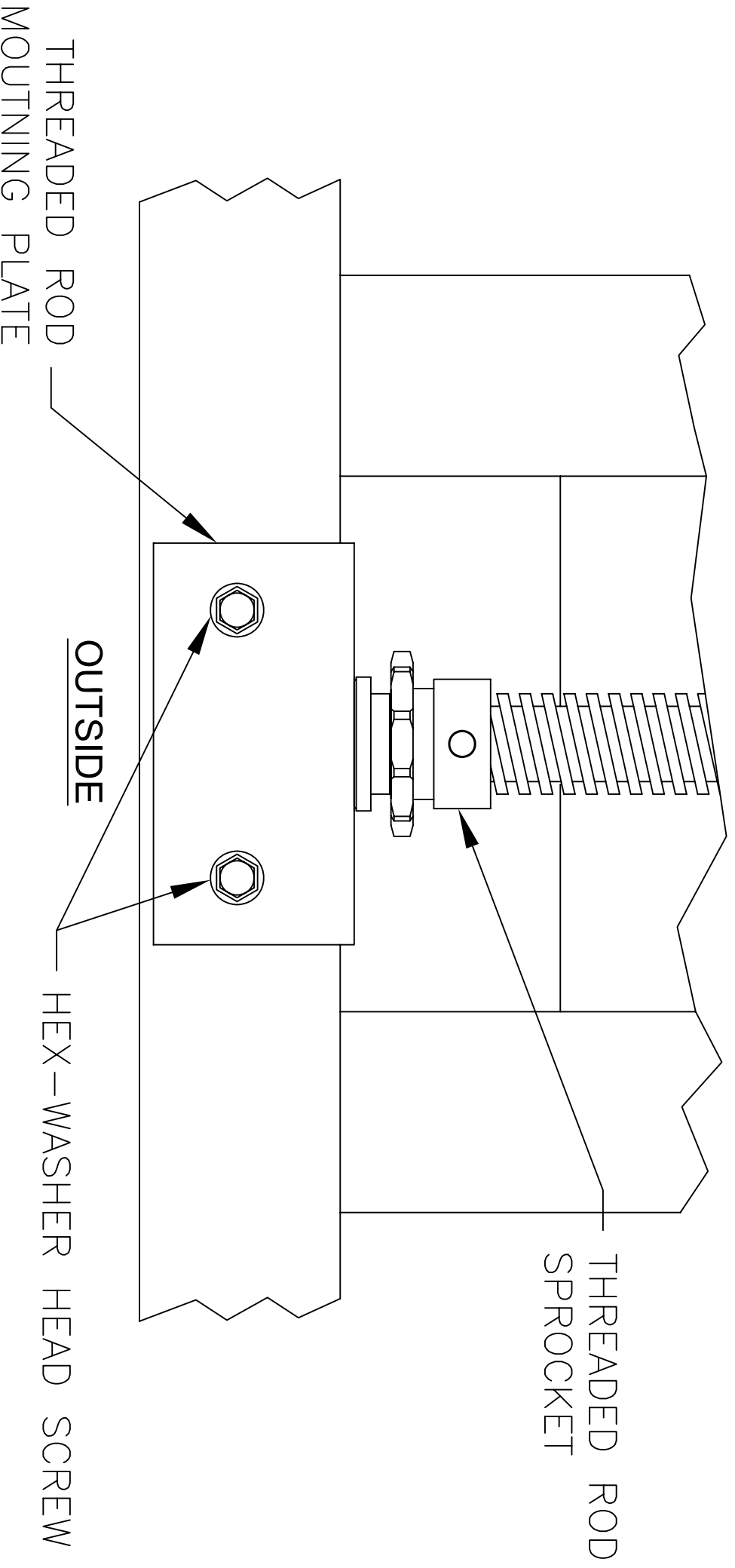


# DETAIL 2

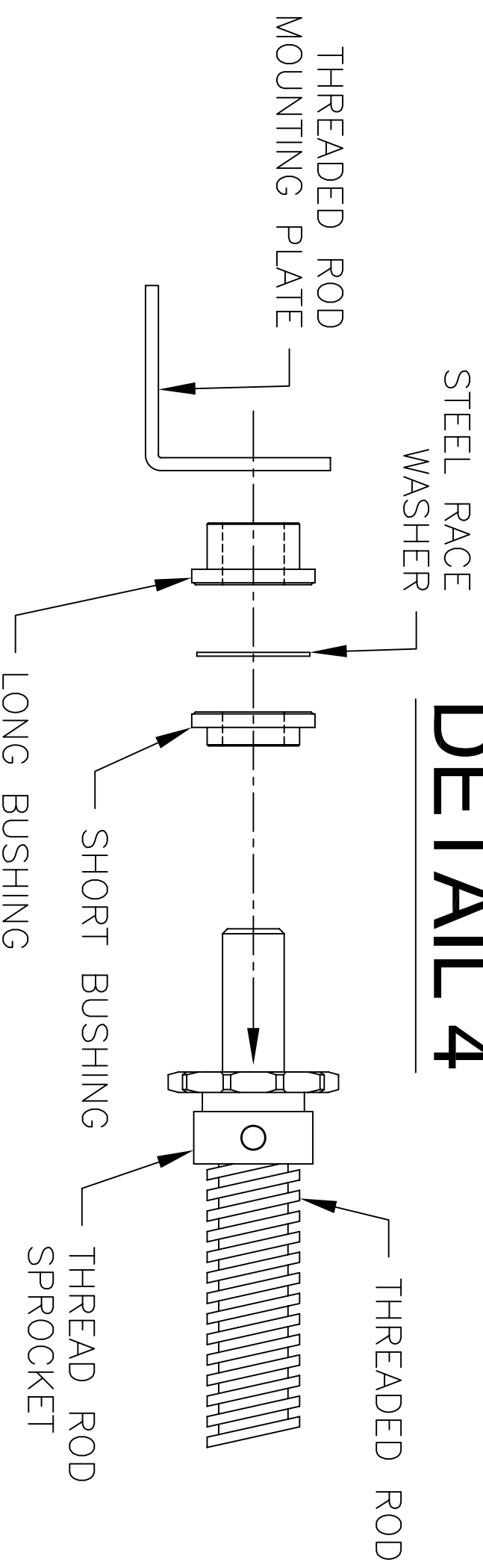


# DETAIL 3

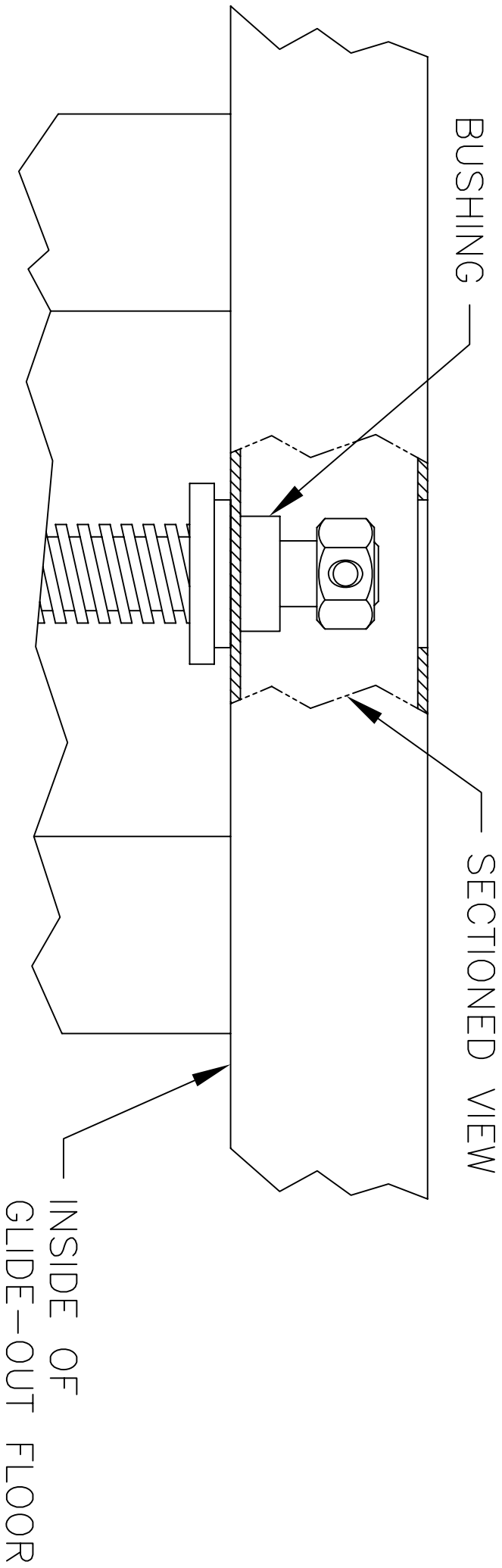
DETAIL SHOWN FROM BELOW  
WITHOUT SWIPE MATERIAL, CHAIN  
AND MISSING BUSHING



# DETAIL 4



# DETAIL 5



# DETAIL 6

DETAIL SHOWN FROM BELOW  
WITHOUT SWIPE MATERIAL AND  
CHAIN

